

Lis Cena

WORK



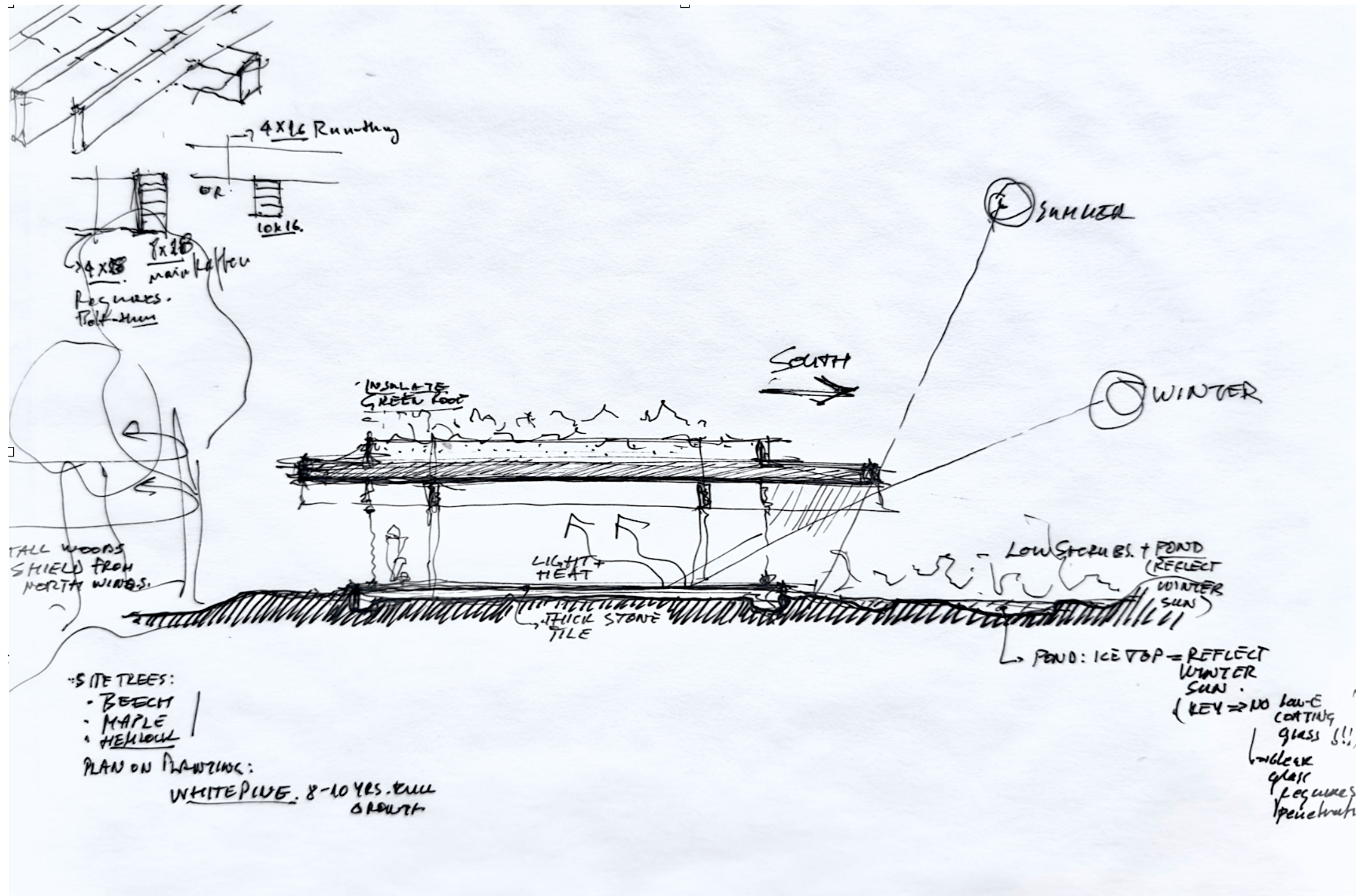
# Private Residence

*2023 - Hudson Valley, NY*  
*14,000 SF*



Private residence designed as a series of low-profile volumes integrated with landscape and local climate. Passive environmental strategies including daylighting, green roof systems, and thermal mass, shape spatial organization and long-term performance.

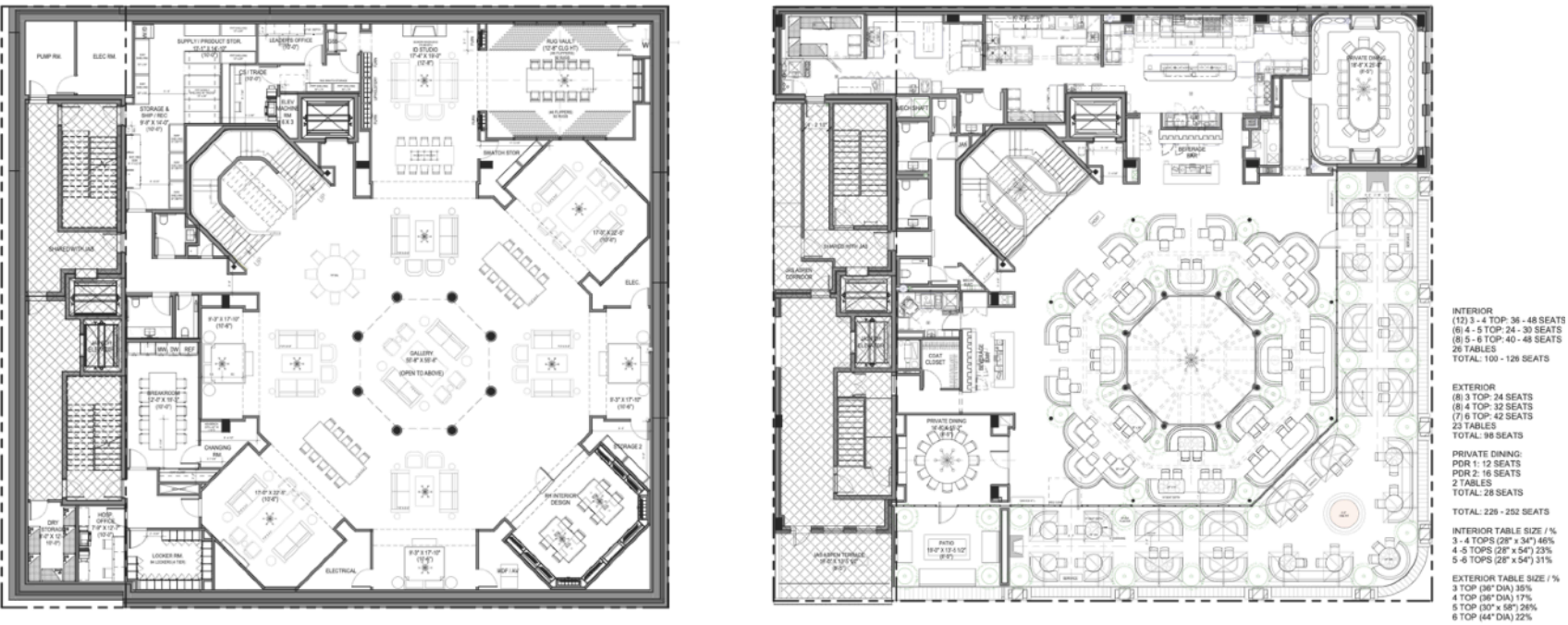






# RH Mountain House

2026 - Aspen, CO  
25,000 SF



All images © Restoration Hardware

Retail flagship integrating a 250-seat restaurant within a compact footprint. A three-story atrium anchored by a large skylight draws natural light deep into the building, visually connecting all levels. A handcrafted brick façade establishes continuity with Aspen’s historic village, reconciling traditional and contemporary architectural details.



# Addition to the American Antiquarian Society

2018 - Worcester, MA  
45,000 SF Renovation / 7,000 SF Addition



*Project completed at Samuel Anderson Architects*

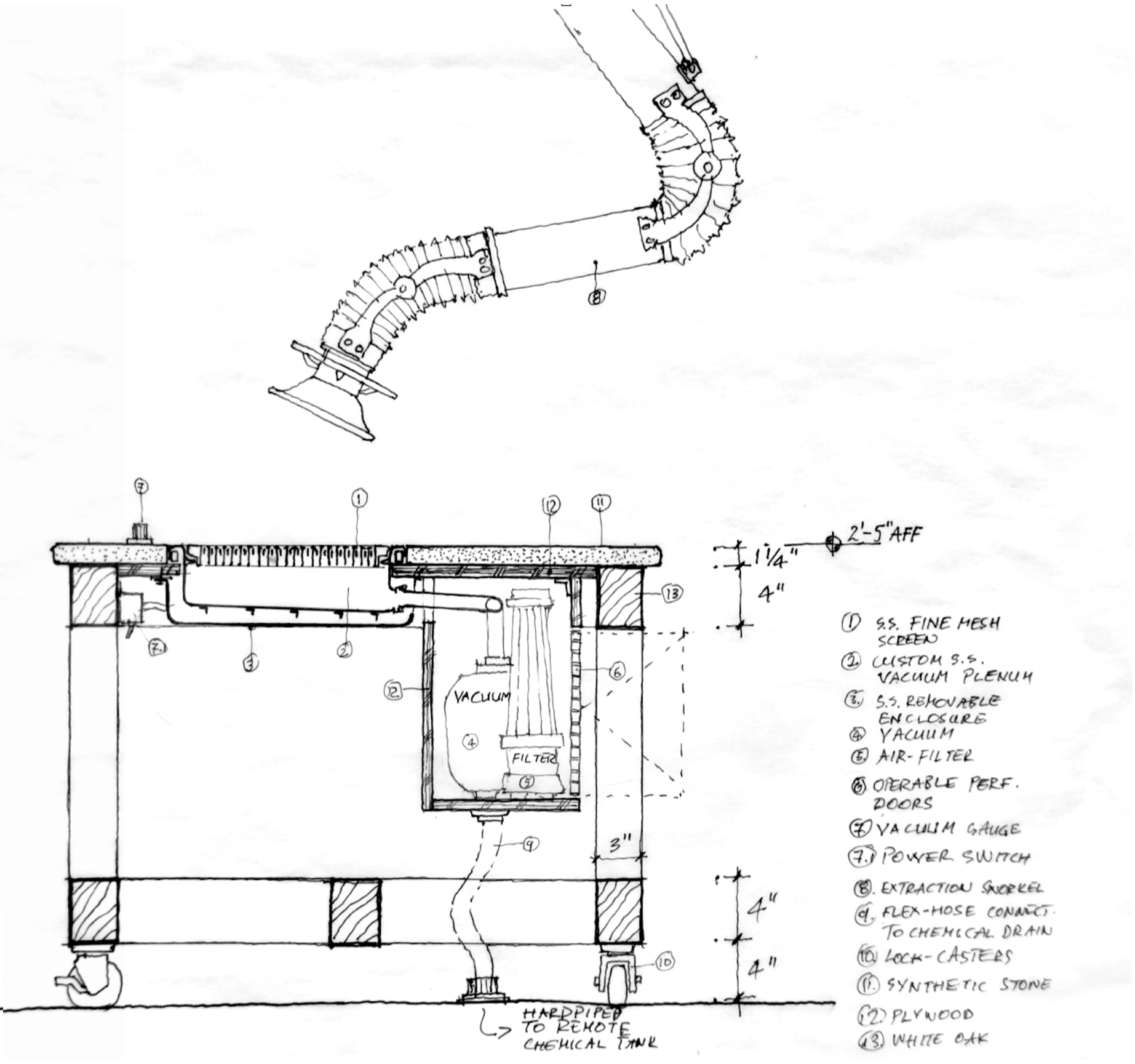
Addition and renovation to a historic research institution, balancing contemporary form with preservation requirements. Integrated daylight, environmental systems, and custom interiors within a tightly regulated historic context, while maintaining ongoing institutional operation.





# SFMoMA Conservation Center

2016 - San Francisco, CA  
20,000 SF



Project completed at Samuel Anderson Architects

Conservation laboratories designed around highly specialized millwork integrating mechanical extraction, lighting, and conservation equipment. Complex technical systems are embedded discreetly to support precise work while maintaining spatial clarity.



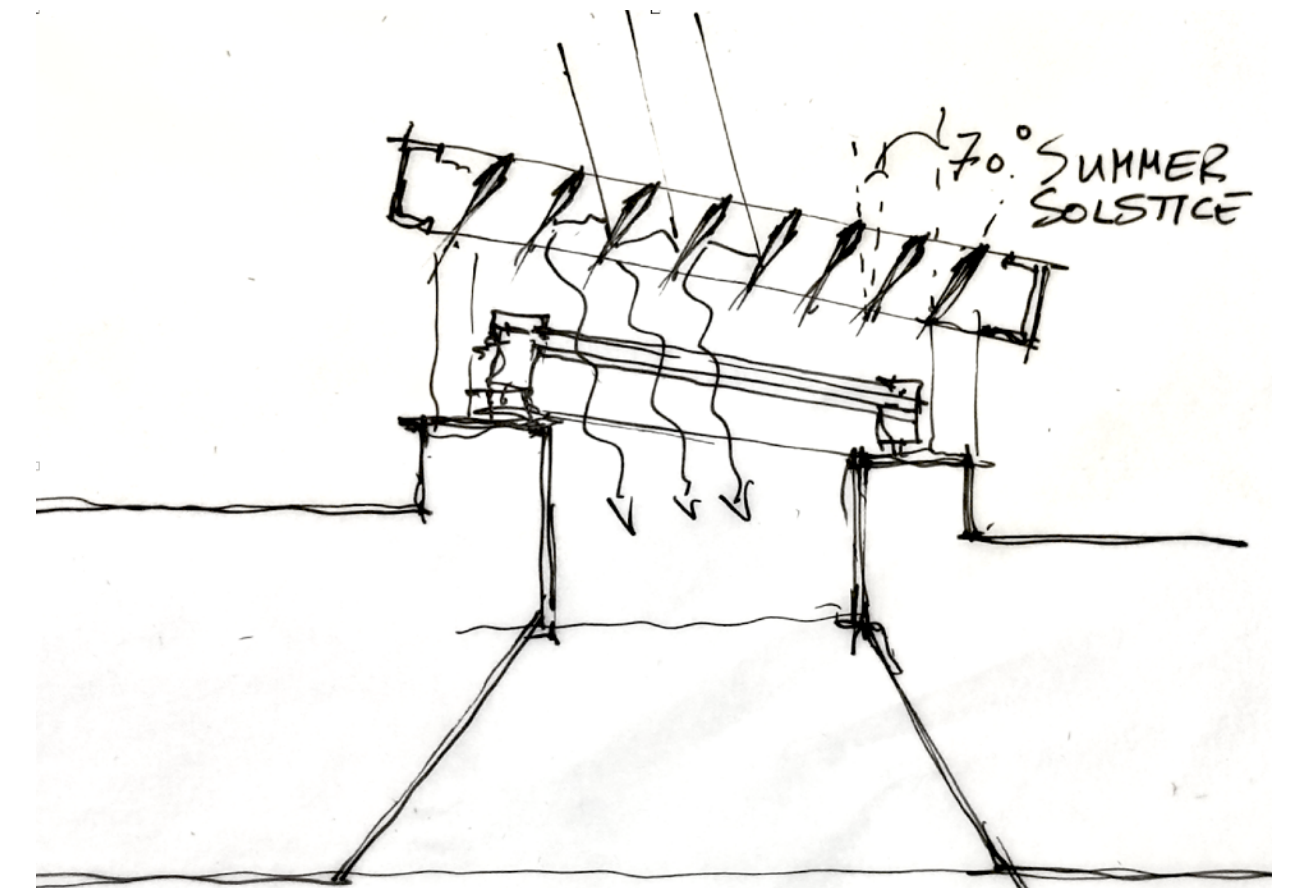
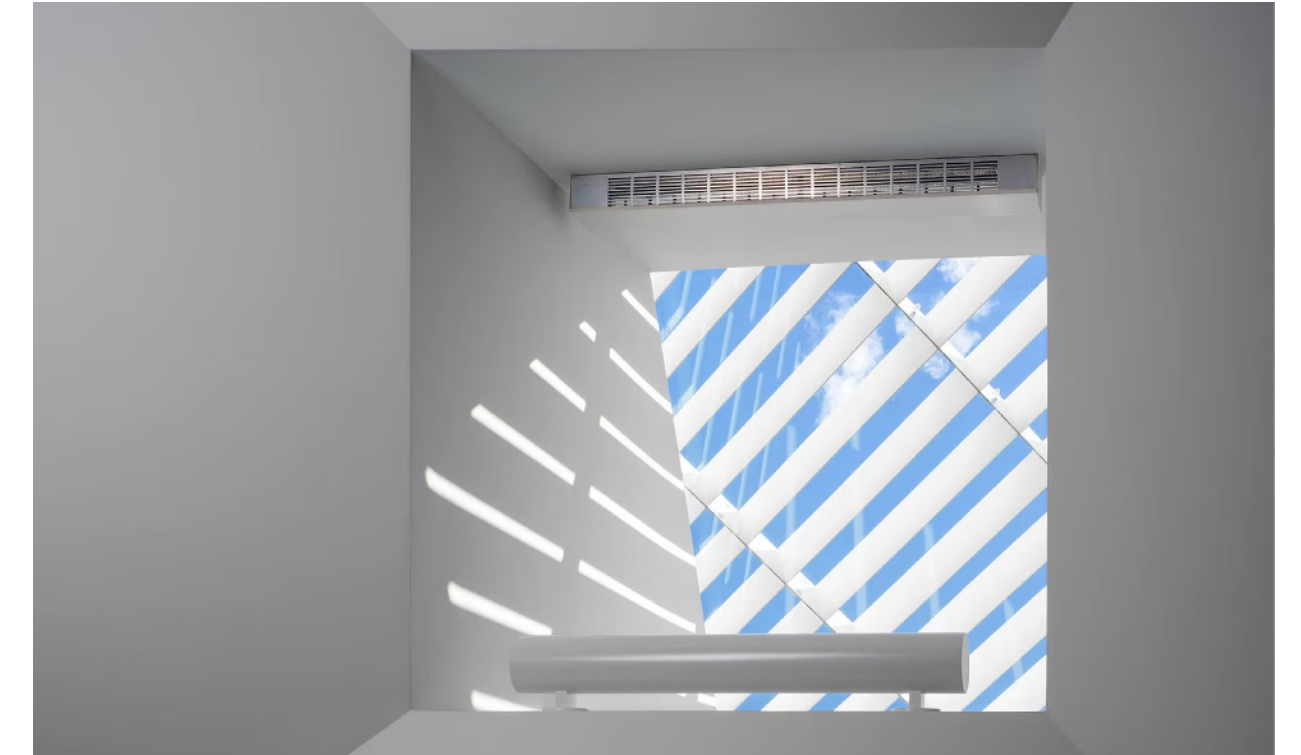
# Yale Museums Conservation Center

2016 - West Haven, CT  
15,000 SF



*Project completed at Samuel Anderson Architects*

Conservation labs unifying diverse collection needs within a single facility, inserted into an existing collections building. New custom skylights are laid out following a structural grid, introducing controlled, filtered daylight.





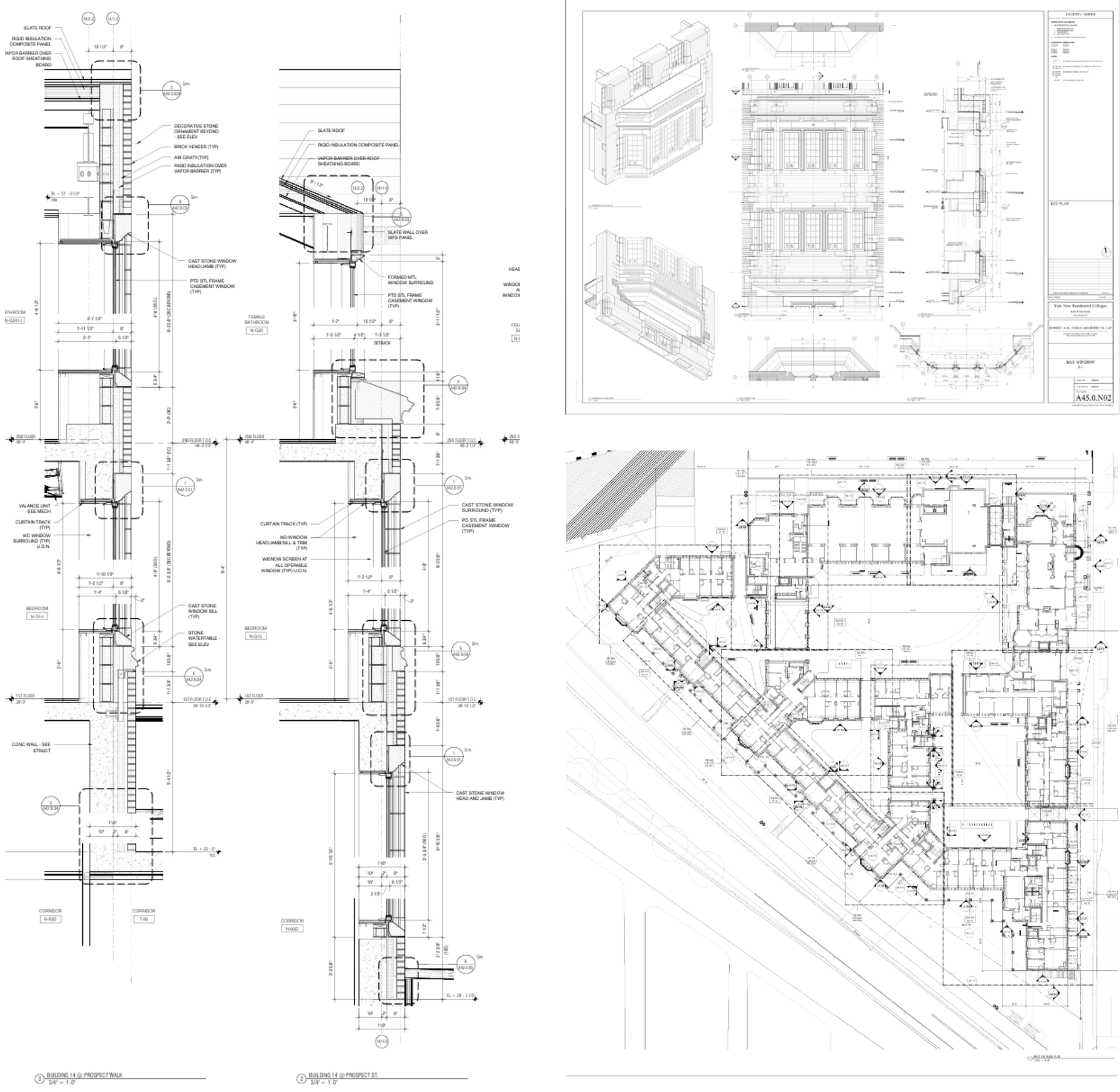
# Yale Residential Colleges

2017 - New Haven, CT  
300,000 SF



Project completed at Robert A.M. Stern Architects

Large-scale residential colleges delivering academic housing, dining, and commons within a historically rooted campus fabric. Contemporary construction and building systems integrate prefabricated and handcrafted elements within a rigorously detailed neo-Gothic framework.





# LeBow College of Business - Drexel University

2013 - Philadelphia, PA  
175,000 SF



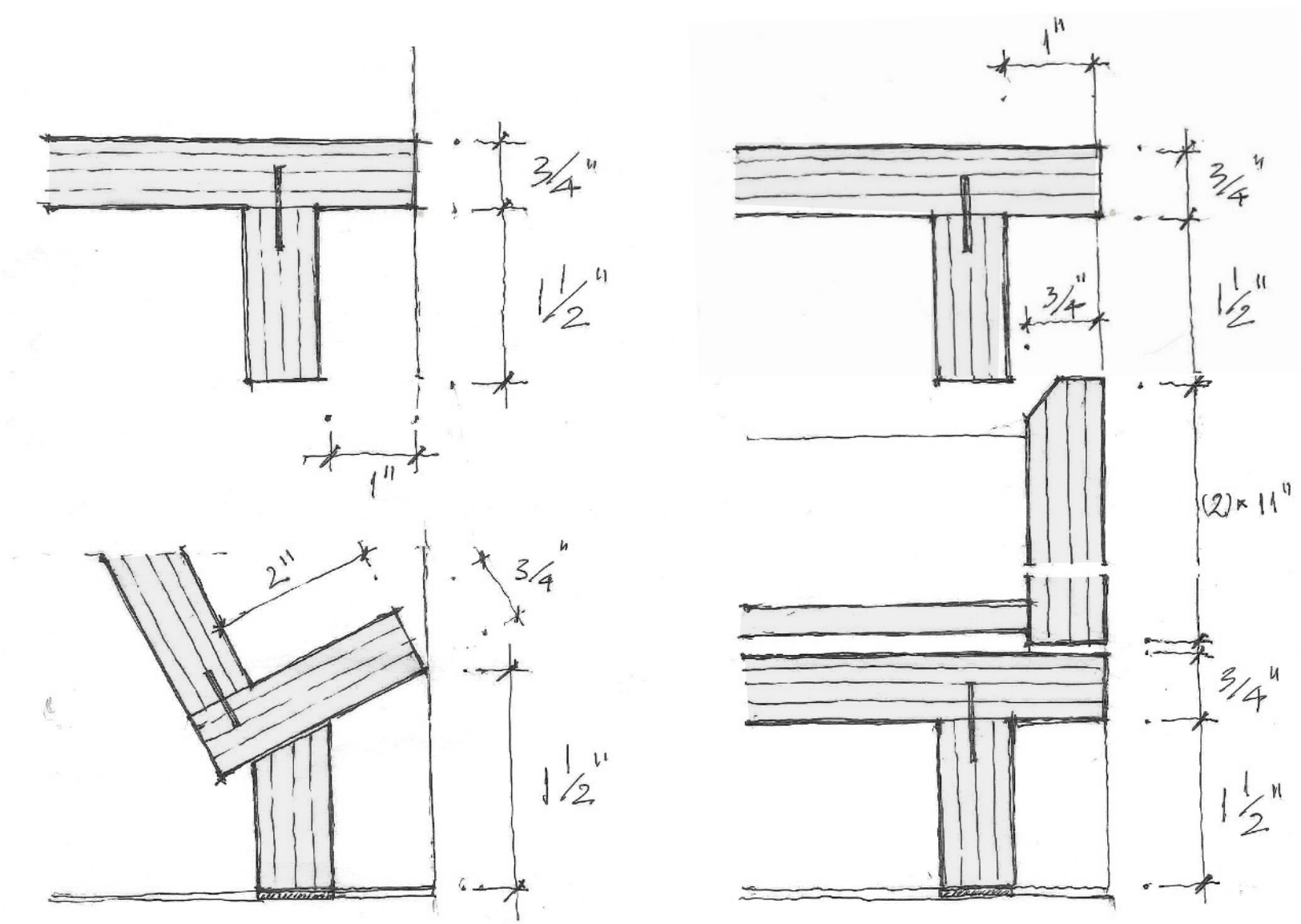
*Project completed at Robert A.M. Stern Architects*

Academic building integrating classrooms, auditoria, faculty offices, and research centers within a dense, multi-story institutional framework. Complex circulation, daylighting, and environmental systems are coordinated to support academic use, public assembly, and long-term performance.



# Artist Loft

2018 - New York, NY  
1,500 SF



Interior renovation centered on custom millwork, spatial clarity, and efficient use of limited volume. Carefully detailed assemblies integrate storage, structure, and technology into a cohesive architectural system.



# Seated Figure

2021





# Ceramic Objects

2025

